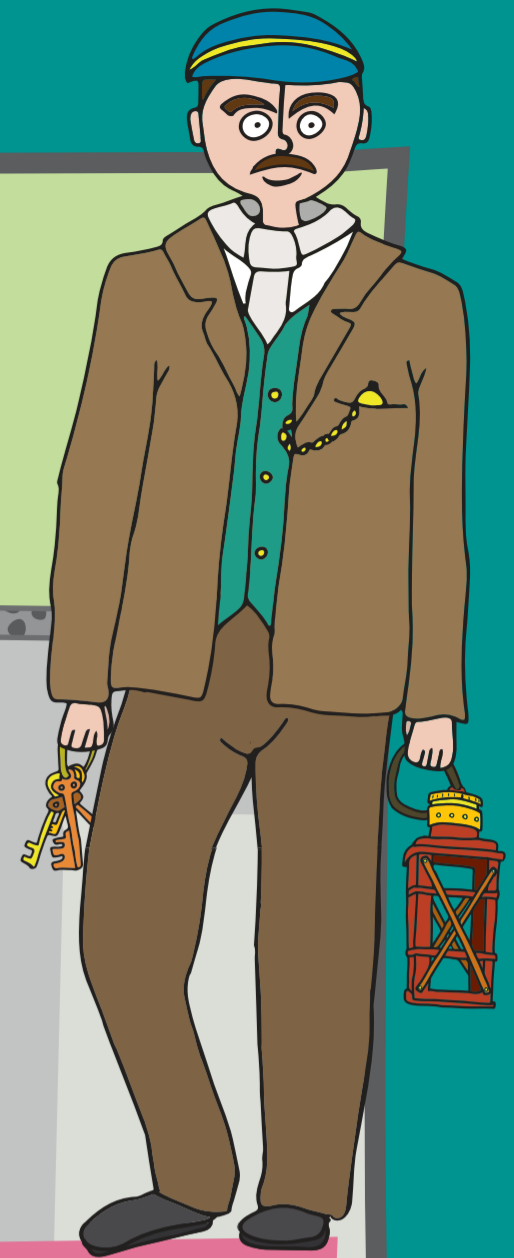
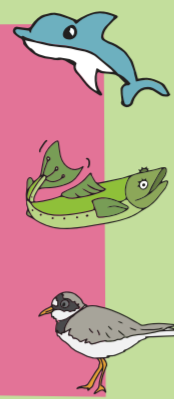


# The Pavilion Keeper of The Mount



## Marine life

The sea around you is full of amazing creatures: dolphins, porpoises and seals zoom through the sparkling waters and little birds like ringed plovers and turnstones scamper on the beaches looking for snacks. You can learn more about the estuary and its wildlife by reading 'The Little Cucumber Fish of Wyre' Tale Trail. You can download the map and story for free by visiting the 'Living Seas North West' website [livingseasnw.org.uk](http://livingseasnw.org.uk)



## The view

The view Visitors have taken pleasure in gazing at the stunning views of the Lake District hills across Morecambe Bay for decades. Can you spot the beach, your home maybe or any seabirds from the top of The Mount?



**NORTH**  
Morecambe Bay and  
The Lake District

## Perfect Picnic spot

In the Georgian times Starr Hill was a very popular picnic spot for locals who came to take in the fresh sea air and wonder at the hundreds of gulls that nested on the dune. Apparently there were plenty of nests to marvel at as well.



## Fascinating folklore

Apparently one of the oldest ghosts of Lancashire lives near Fleetwood. He is called the Hairy Boggart; half man and half beast and a terrible menace around the home! Boggarts like to steal things, pull your ears at night and play naughty jokes to annoy people. If you spot a hole in the ground, take care as a boggart might live there; but don't worry, you can protect yourself by keeping some salt in your pocket!!



## Regency Gardens

were created in the early 1800s. They are a magical and imaginative type of planned garden that include dark and light areas, shrubberies and rockeries, tea rooms, amazing views, pavilions and circular paths that wind around them.

## Navigation

A really clever navigation system was designed by a man called Captain Henry Mangles Denham, who became an admiral in the Navy and had mapped many coastal areas before. He used The Mount, the Wyre Light and the two Pharos lighthouses (designed by Burton and Denham) to help guide ships into the port. The flagstaff on the first pavilion sent signals to the ships at sea.

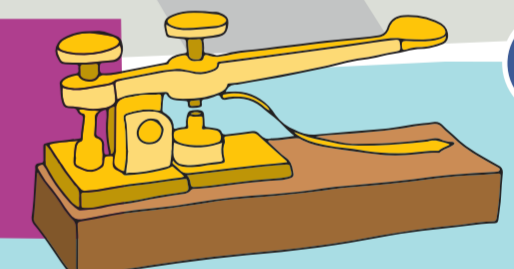


## Swamps and settlers

Many thousands of years ago, the sea levels were much lower than they are today. The bay area was covered in vast wet woodlands where wild boar and wolves roamed. Celtic tribes hunted here and Vikings raided coastal villages. Romans constructed long, straight roads along the coast and a Northman named Haakon built his longhouse nearby. It has been a really important area for thousands of years.



**Can you...**  
tap out your own name  
in Morse Code using dots  
and dashes?



|   |         |   |         |   |         |   |           |
|---|---------|---|---------|---|---------|---|-----------|
| A | · - -   | J | · - - - | S | · · ·   | 1 | · - - - - |
| B | - · · · | K | · - · - | T | - - -   | 2 | · · - - - |
| C | - · - · | L | · · · · | U | - · - · | 3 | · · · - - |
| D | - · · · | M | - - -   | V | · - · - | 4 | · · · - - |
| E | ·       | N | · - ·   | W | - · - - | 5 | · · · ·   |
| F | · · - · | O | - - -   | X | · · - - | 6 | · · · ·   |
| G | - · - - | P | · - · - | Y | · - - - | 7 | - · - · · |
| H | · · · · | Q | · - · - | Z | - · - · | 8 | - · - · · |
| I | · ·     | R | · - ·   |   |         | 9 | - · - · · |
|   |         |   |         |   |         | 0 | - - - - - |

## Entrance Lodge



There is a fantastic new tea room being developed and a work space for local artists and scientists to run activities too.

**Take Care**  
This adventure takes you around the paths of The Mount which are suitable for buggies and wheelchairs, however some paths have a steep gradient. Assistance may be required to get to the top in manual wheelchairs, however motorised wheelchairs would be suitable for this site. Please share spaces responsibly, keep dogs on a lead and watch wildlife from a distance. Please take away any litter or place it in bins provided to prevent damage to wildlife and wild places.  
Discover more at [www.taletrails.co.uk](http://www.taletrails.co.uk)

**Contact Details**  
For enquiries please contact the Parks & Open Spaces team on 01253 891000.  
Copyright © 2021 Wyre Council [www.wyre.gov.uk](http://www.wyre.gov.uk)  
Map illustration and design by Custard Graphic Design [www.custard-graphic-design.co.uk](http://www.custard-graphic-design.co.uk)





# The Pavilion Keeper of The Mount

For hundreds of years, right beneath your feet, tiny grains of sand have been gathering one by one to create a magnificent hill... The Mount! It is one of the most famous sand dunes in all of England.

Celtic warriors, Roman soldiers and Viking raiders all probably stood and looked out across Morecambe Bay from the top of this sandy giant. Even one of the most famous queens of all time visited too, so you are literally standing in the footsteps of royalty!

This sleepy sandy giant known back then as Starr Hill is about to become VERY famous; something VERY exciting is going to happen...

Welcome to Georgian England, 200 years ago... ladies are not allowed to show their ankles, men are expected to grow giant face whiskers and it is considered very rude to look straight into the eyes of a stranger... unusual times! But more importantly a local landowner called Sir Peter Hesketh-Fleetwood (who had amazing face whiskers) is planning a brand new town. He wants to transform the sand dune, the mouth of the River Wyre and the land around them into a stylish new town with a port and a park and guess what... The Mount will be the magnificent centrepiece!



The park around The Mount will have to be really fashionable, with exotic plants from around the world and hidden gardens. If you hunt carefully today you can still see and smell eucalyptus trees from Australia and purple lavender too; they both smell AMAZING! Georgian 'Regency' gardens are magical places with lots of surprises, beautiful colours and the best views. The Mount Regency garden must be fit for kings and queens!



4

Talking of cheeky visitors, have you ever heard of the Hairy Boggart...?

During the Victorian times in the 1860s there were hundreds of boggarts in the North of England, and guess what? Lancashire was the hotspot of their mischievous games! They are very strange-looking creatures, half man and half beast, with a grizzly face and hairy, pointy ears. Boggarts love to steal things and play naughty tricks on you. They are very clever and can change into any animal at any time; they're shapeshifters. They like to live underground and on top of hills too. OH HECK!!

They won't cause you any harm though, if you leave them alone, but they do cause a bit of havoc around The Mount. Sometimes at night time when there is no wind, my lantern will blow out, leaving me with only the stars for light. And occasionally in the mornings my chest will be open with a piece of my equipment missing... in fact, LOOK!... Today there is nothing left in there at all!



When you are walking around The Mount, take care if you spot a small hole in the ground or see a tree with slime on it; clues that the Hairy Boggart might live there. But don't worry, you can always protect yourself by keeping some salt in your pocket; that's the Victorian way.

It's also really important not to name the Hairy Boggart, because if you do, he might follow you home, pull your ears at night time and turn your milk sour, and you can never get rid of them. Saying that, though, boggarts can be very helpful around the house if you look after them and leave a few crumbs of bread out. In fact, a friend of mine has kept one for years that likes to change itself into a ginger cat. Anyone fancy a new furry friend?

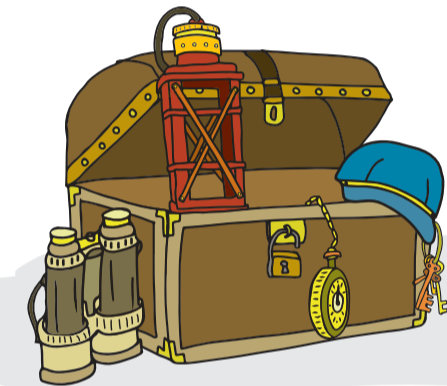
Can you help Charlie find his equipment on the map? Watch out for boggarts and smugglers!!

Let's fast-forward a bit... It's 1836 and the first buildings, the Custom House and a pub are being built. Sir Peter Hesketh-Fleetwood has hired a trendy architect called Decimus Burton to design his new town. Apparently Decimus is 'cool, rich and well-dressed', just the man for the job! Thanks to his super ideas The Mount gardens and Fleetwood town are really starting to take shape. How exciting!

Times are changing quickly, though; just a few years later Queen Victoria wants to visit and Fleetwood is a bustling 24-hour port with a new pavilion built on The Mount watching over land and sea. The pavilion helps guide ships into the port; because it's SO high up it's a great place to see and record the weather too... and it's mostly... WINDY!!

Also, a very clever sea captain called Captain Henry Mangles Denham has helped to build three lighthouses to guide bigger ships into port: the Wyre Light, the Pharos Lighthouse and the Lower Lighthouse. Do you know them? There are also powerful steam trains bringing passengers up from London and boats sailing from Fleetwood to Ireland and Scotland. What a VERY busy and VERY important place Fleetwood has become!

BUT... How rude of me!! I was so excited to tell you my beloved town's story that I completely forgot to tell you who I am. My name is Charlie and I was the pavilion keeper here at The

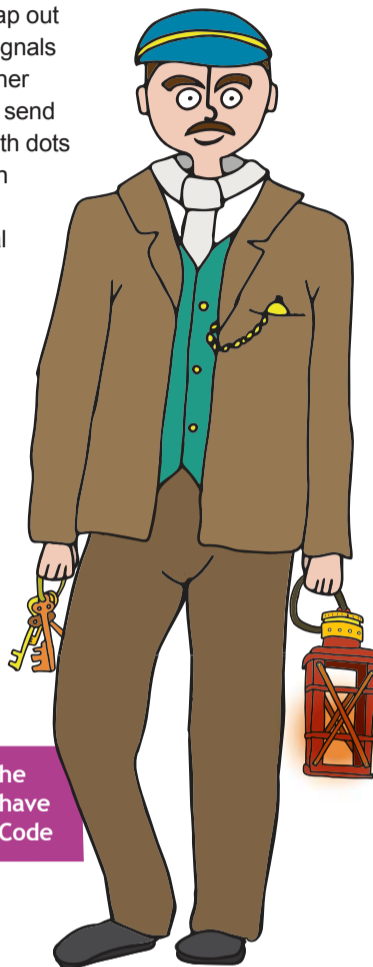


Turn over to the map side and have a go at Morse Code

Mount in the Victorian times. Like all other types of keepers (lighthouse keepers, gate keepers, zoo keepers) I have a really important job to do and only I keep the keys!

Every day at the pavilion I have to take weather recordings, like wind speed, wind direction and rainfall amounts, so that all the ships out at sea know what the weather will be like when they arrive at Fleetwood port. I have a smart new piece of equipment called an anemometer that tells me the wind speed and a rain gauge to measure any rainfall.

We don't have computers or phones yet, so I use an electrical telegraph machine to send messages. I tap out Morse code signals for each weather recording and send a telegraph with dots and dashes on it down to the Meteorological Society in London. I get paid £10 a year to do this really important job.



5

It's 1902 and the start of a new era... the Edwardian period. King Edward VII is now on the throne and I have long since retired as pavilion keeper, but I still like to take a walk around the park, so keep a lookout for me. Big changes are happening at the top of The Mount too. A new octagon-shaped pavilion is being built, with a smart, shiny copper roof... It's the same pavilion you can still see today. It's more than 100 years old!

How many sides has the pavilion got? Each one has a different view and different weather! I wonder what you will spot when you visit...

A little bird also told me that a local man called Isaac Spencer presented a beautiful pavilion clock, in memory of the men who died in World War I, and that it is still ticking today... is that true?

You might also be able to spot a weathervane on the roof; a great way for you all to see which direction the wind is coming from. Watch out when it comes from the north... very chilly! Can you spot the clock and the weathervane? What shape can you see on top?

Talking of little birds, did you know that there are hundreds of different animals and birds that live on and around The Mount? They are always about, and if you walk and talk very quietly you will be able to spot them. Let me tell you where the best places to see them are...

In the park I often see seagulls soaring in the skies above and I hear little garden birds tweeting in the trees. In summer I have spotted sparrows, blue tits and blackbirds looking for worms, and once I even spied a rare yellow-browed warbler passing from Siberia!

When the beautiful flowers are in bloom you might spot some helpful bees and beetles busy pollinating too. They make sure that the flowers come back next year. Did you know that bees have five eyes and can't see the colour red!

Also, hiding under the ground, right beneath your feet, there could be some seaside-loving reptiles like common lizards and grass snakes; maybe even mice, moles and rabbits! It's not just humans that love The Mount.

Have a look on the map to see the 'Pavilion Keeper's Wildlife Hotspots'...

I can't lend you my binoculars, I'm afraid, but if you are lucky enough to have some of your own, you can spot all sorts of amazing wildlife from the top of The Mount. On the beach there are little ringed plovers, sanderlings and turnstones all looking for snacks, and if you are really lucky you might spot seals, dolphins and even whales diving through the waves. Fleetwood really is bursting with life if you take the time to see it.



2

It's September in 1847 and there are some very important visitors coming to Fleetwood today: Queen Victoria and her husband Prince Albert are on their way back from Scotland!

In the Victorian times Fleetwood was one of the busiest fishing ports in England; in the top three, some say! Fleetwood is also famous for ferocious storms and fearless lifeboatmen who venture out in all weather to save lives, so I can see why a queen would want to visit.

The queen will be arriving this evening in her Royal yacht steamer ship, accompanied by her other boats, the Black Eagle and the Fairy. They are going to moor up near the North Euston Hotel... I must make sure I wear my best hat!



If you had your own Royal ship what would you call it? What would your flag look like?

My friend who works in town at the printers has made her a copy of the local newspaper, the Fleetwood Chronicle, and printed it in gold. I really hope the Queen gives me a wave as they sail past The Mount! I'd better make sure the pavilion windows are squeaky clean and the flag is waving at full mast... The Mount will probably be the first thing they see as they head inland.

Now where are my keys??? Mmmmm... It would seem that someone has stolen Charlie's keys! Can you spot them on the map?

It's a good job we have courageous coastguards on the lookout here in Fleetwood as there are some very cheeky visitors around The Mount, and often it's very hard to spot them. Victorian whisky smugglers have been known to use secret tunnels that start under the North Euston Hotel and go all the way to The Mount. I hope they aren't hiding under the pavilion!

6

Many years have passed since I was the proud keeper of the pavilion. Many ships have sailed in and out of the port, many thousands of seabirds have soared across the bay, and many little footsteps have climbed up and down The Mount... you might still see or hear mine occasionally!

I feel so lucky to have lived where the land meets the sea; a magical place full of sea shanties, salty stories and amazing places like The Mount. Everywhere you look there are things to remind us of times gone by... a shipwreck out in the bay, a flower in The Mount gardens... and the pavilion, of course! It's good to wonder about the people who left them too.

So, now make your way to the top of the magnificent Mount, that's here for all of us... wonder at the wildlife around you, gaze across the silvery sands of Morecambe Bay and enjoy this little sea shanty that I have left for you...

Ohhh Ohhh over the bay  
the big boats chug and the fisherman sway  
the seabirds soar and the dolphins play  
on the crest of the waves in the turquoise spray  
Up on The Mount where the wind blows free  
and the salty air smells like home to me  
Watch the ships sail by on the big blue sea  
Oh Fleetwood town is the place to be...



Find out more at: [www.taletrails.co.uk](http://www.taletrails.co.uk)

Published by Tale Trails  
Illustrations and Design by Custard Graphic Design  
[www.custard-graphics.co.uk](http://www.custard-graphics.co.uk)  
Copyright © 2021 Wyre Council  
[www.wyre.gov.uk](http://www.wyre.gov.uk)

1820s A big old sand dune called Starr Hill or Turp Hill has been stood on by Vikings, Romans and Celts and keeper sends weather information to Greenwich will become The Mount.  
1830s Sir Peter Hesketh-Fleetwood makes Preston and for a new railway line to link the coast to Fleetwood London. This ambitious plan includes a new town, a port with a sheltered harbour, access to golden sands, clean air and views... what more could anyone want!  
1836 Sir Peter Hesketh-Fleetwood hires architect Decimus Burton to design the town. Thanks to his Fleetwood's best-loved landmarks.  
1838 The old sand dune becomes The Mount... a central point watching over land and sea with a hilltop pavilion constructed on it. It's all about the views!  
1840 The Mount, the pavilion and flagstaff and various lighthouses were part of the new series of navigation aids and a weather observation point.  
1844 Steam trains start bringing passengers up from London Euston and boats sail from Fleetwood to Ireland and Scotland.  
1847 Fleetwood is one of the most successful fishing ports in the UK. Queen Victoria also came to visit in this year.  
1861 The pavilion is an important lookout for the coastguards too. In this year Sir Peter Hesketh-Fleetwood also builds a stone cobbled wall around the Mount but the locals tell him off, so most of it is removed. You can still see some of it by the entrance lodge.  
1876 The Meteorological Office installs an anemometer to measure wind speed. The pavilion will become The Mount.  
1891 The Fleetwood fishing industry is booming. The pavilion clock to the town in memory of the men who died in World War I. It is a registered central point watching over land and sea with a hilltop pavilion becomes a 24-hour port with state-of-the-art navigation aids and a weather observation point.  
1902 A new octagon-shaped pavilion is built, with clean air and views... what more could anyone want!  
1919 Local businessman Isaac Spencer presents Decimus Burton to design the town. Thanks to his Fleetwood's best-loved landmarks.  
1927 The pavilion continues to be one of Fleetwood's best-loved landmarks.  
2021 The Mount Park still looks just like a Regency garden. It really hasn't changed much in the last 200 years. It is also 'listed', which means it is a very special historic place that needs to be looked after. The restoration of The Mount has been completed thanks to all the volunteers and funders involved, including Mrs Lorraine, Wyre Council, The National Lottery Heritage Fund and the National Lottery Community Fund.

fun local story walks  
for children and the young at heart  
Places to visit around  
The Wyre

The Pavilion Keeper of The Mount  
A family story trail around Fleetwood Mount



Easy to follow Map & Story  
Explore, spot things & search for clues on the way  
Tale trails